



CAMPAIGN FURNITURE & EQUIPAGE



## THE COMPANY

Campaign furniture which is designed to be 'folded up' and carried long distances has been a feature of travelling armies over many centuries. With the expansion of the European colonizers through the eighteenth and nineteenth centuries, the finest European furniture makers competed to design and produce elegant, ingenious and fashionable knock-down furniture for colonial officers and civilians traveling in the colonies.

The administrators and armies of the British Empire in the Indian subcontinent were perhaps the largest consumer of campaign furniture leading to high quality local manufacturing of durable, practical and elegant 'knock-down' chairs, tables, desks, bookcases and beds. We have revived this craft using the finest furniture craftsmen and materials to present you with furniture and accessories of a lasting quality which will delight you for a lifetime indoors or outdoors, at home or at your camp.



## CHAIRS



KING GEORGE ON THE KING GEORGE FIELD CHAIR, ON A SHIKAR EXPEDITION  
NEPAL 1911

## SCINDE SALOON CHAIR

This folding salon chair made of rich rosewood; canvas and leather seat and back, with a folding side-tray is an outstanding example of Victorian campaign design. It was popularly used to furnish railway Salon cars of Indian Maharajas. Due to the strength and durability of the materials and construction and its easy portability the chair is perfectly suited for outdoor use or to compliment your home or office. Use it to park yourself anywhere in luxury and comfort.

W	D	H
30 ½"	21"	35"







## ANDERSON SAFARI CHAIR

This folding rosewood Directors type chair is a design from the end of the 19th Century. To fold it, the leatherback is lifted off its post, which allows the arms to drop on their hinges to the sides of the legs. The X frame legs can then be folded, once their riveted locking bars are opened. Best quality buffalo harness leather has been used making this one of the finest and strongest chairs for field use. It makes for a comfortable desk chair besides having been used in numerous Shikar camps in India during the early 20th century.

W: 21"  
D: 18"  
H: 31"



## BAREILLY CHAIR

This is a fabulous armchair, which folds! Handmade from solid rosewood this chair is available with full hand caning or with buffalo hides seat and back that is hand caned for extra support. A unique piece of furniture that is elegant both indoors and outdoors and constructs easily.

W : 22"

D : 23"

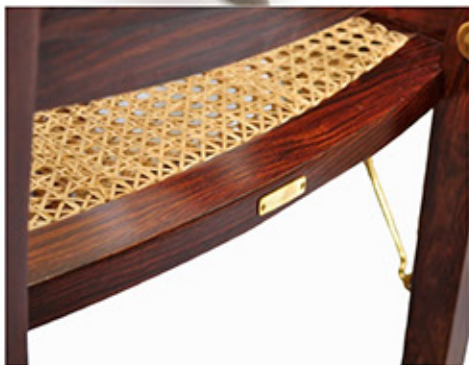
H : 42"

SEAT HEIGHT: 19"

KNOCKED DOWN:

D : 5"

H : 41"





## BOMBAY POLO CHAIR

This charmingly compact folding chair is very sturdy, lightweight and comfortable. Made from solid rosewood with a buffalo hide seat this delightful piece will provide years of elegance and convenience in the home or outdoors.

W: 15.5"  
D: 18"  
H: 33"

SEAT HEIGHT: 18"

FOLDED

D: 4"  
H: 36"



## CUNNINGHAM ROORKHEE CHAIR

This highly portable, lightweight, extremely comfortable chair has a brilliantly functional design that makes it stable to sit on even in the most uneven terrain. A workhorse of the British colonial campaign ensemble until well into the last century this chair is virtually indestructible and will become a much-loved feature in your home or at your outdoor activities. When you use the chair, the straps, arms, seat, and back all act under tension to keep the whole structure in place, allowing it to adjust to uneven ground and remain perfectly stable. Made from the finest Rosewood, canvas and buffalo hide, the chair comes with its own carrying bag of durable canvas included in the price.



W	D	H
21 ¾"	21 ¾"	34½"

SEAT HEIGHT 16 ½"





## TITANIC DECK CHAIR

The rosewood deck chair is in the style of recliners found on luxury liners in the early years of the twentieth century. The seat, backrest and the extendable footrest are caned. The chair comes with a well-padded canvas cushion.

W	D	H
24"	36"	38 ½"

OPEN LENGTH	54"
HEIGHT OF SEAT	15 ½"



## GEN ALLARD CHAIR

This folding armchair is the perfect directors chair – simple yet extremely elegant. The seat is made from hand woven buffalo leather. This chair will make the ultimate style statement in your drawing room.



W	D	H
28 ¼"	20"	33 ¾"

SEAT HEIGHT 16"





## GEORGE MALLORY EXPEDITION CHAIR

Made of rosewood with double caned seat and back. This chair has an ingenious folding mechanism, which folds it flat, making it extremely compact for travel. The bottoms of the legs are rubberized. Two chairs fold up neatly and fit into a 24 Oz canvas bag.

W	D	H
17 ½"	22"	29 ½"



CANVAS BAG FOR GEORGE MALLORY EXPEDITION CHAIR  
(A SET OF TWO IN A BAG)



## GOOJERAT CHAIR

This chair is steeped in history as the British soldiers found the original after the battle of Goojerat, fought against the Sikh rulers following the death of Ranjit Singh the "Lion of the Punjab". These chairs belonged to French Officers serving in the Sikh army. This rosewood and leather masterpiece is a must for your library or smoking room. The comfort and adjustability of the seat makes it a unique piece of furniture.

W	D	H
26"	42 ½"	35"



## SUBALTERN TRIPOD SEAT

This classic and elegant stool has legs of solid rosewood and seat made from tough and pliable leather. Solid brass hardware reinforces the seat as well as legs to ensure a lifetime of use in comfort wherever you may choose, indoors or at outdoor events. A great accessory for persons on the move. Comes with a buckled strap for transport.

W	D	H
17"	17"	23"



## CUNNINGHAM STOOL

The Cunningham Stool is a minimalist design with a lot to offer. Its strong rosewood legs and canvas/leather sling make it extremely hardy yet lightweight: a challenging combination to achieve! The folding stool compliments our classic Cunningham Roorkee chair beautifully as it also doubles as a footstool. With matching leg carvings, they make a perfect set. The stool folds flat, making it fit for travel as well as storage. This comfortable style makes an excellent addition to your home, garden or camping trip.



Dimensions:

W: 23
D: 18.5
H: 18
(Folded)
W: 4
D: 18.5
H: 28



## MASHOBRA CHAIR

Watch the sun go down or the world go by as you relax in this rosewood and canvas lounge chair recreated from an era of siestas and mint juleps. Extended flattened arms allow for hauling yourself up, perching your leg over the side or placing a drink. A solid brass mechanism enables you to have a choice of three reclining positions. Folds quickly and compactly for storage or transport.



W	D	H
26 ½"	44 ½"	38 ½"





## ROSS CHAIR

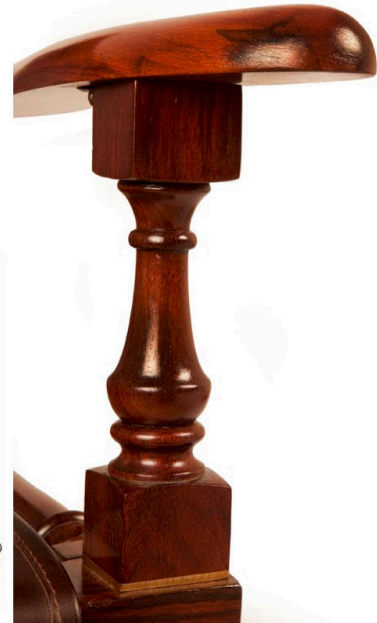
Named after E. Ross & Co., renowned campaign furniture makers in Victorian era Dublin this beautiful knockdown chair is made with solid rosewood and chocolate brown buffalo hide to provide years of use both outdoors and indoors. This chair exudes elegance with its curved arms and brass tacked back. Can be constructed quickly without any tools and has a carrying case for transport and storage.

W: 24 ½"

D: 23 ½"

H: 35 ½"

SEAT HEIGHT 17 ½"



## KING GEORGE FIELD CHAIR

A brilliant design allows this chair to fold to just 2.75 inches thick. Superbly hand crafted from richly seasoned dark rosewood, it has a perfect double layer of caning for outstanding comfort and durability. A rosewood frame conceals the knots in the caning so the chair looks elegant even from behind or when folded. The functional brass fittings are hand made and highly polished to harmoniously accentuate the elegance of this fine chair. It has a swiveling backrest, which adjusts, to your seating position for perfect comfort. Exquisitely blending style, comfort and durability, this easily portable masterpiece will feel equally at home in your house, porch, campsite or boat. The chair has a canvas and leather carry bag.



### CHAIR WHEN OPENED

W: 20"

D: 25"

H: 34"

*Seat Height:* 17.5"

*Seat Width:* 17"



### CHAIR WHEN FOLDED

W: 20"

H: 43"

THICKNESS: 2 3/4"

WEIGHT: 13 POUNDS



## KING GEORGE FIELD CHAIR (FIRM BACK)

A brilliant design allows this chair to fold to just 2.75 inches thick. Superbly hand crafted from richly seasoned dark rosewood, it has a perfect double layer of caning for outstanding comfort and durability. A rosewood frame conceals the knots in the caning so the chair looks elegant even from behind or when folded. The functional brass fittings are hand made and highly polished to harmoniously accentuate the elegance of this fine chair. Exquisitely blending style, comfort and durability, this easily portable masterpiece will feel equally at home in your home, porch, campsite or boat.

### DIMENSIONS:

#### CHAIR WHEN OPENED

W: 20"

D: 25"

H: 34"

SEAT HEIGHT: 17.5"

SEAT WIDTH: 17"

#### CHAIR WHEN FOLDED

W: 20"

H: 43"

THICKNESS: 2 3/4"

WEIGHT: 13 POUNDS



## KIPLING CHAIR

Our folding Lounge Chair is superbly hand crafted from richly seasoned dark rosewood and has a perfect double layer of caning for outstanding comfort and durability. A rosewood frame conceals the knots in the caning so the chair looks elegant even from behind or when folded. The functional brass fittings are hand made and highly polished to harmoniously accentuate the elegance of this fine chair.

The gently curved frame provides bespoke comfort and three reclining positions are effortlessly achieved by lifting and adjusting the arms. Can be perfectly paired with our folding table for a splendid portable suite.





W: 23"  
17" SEAT WIDTH

D: 23" WHEN UPRIGHT  
35" WHEN FULLY RECLINED

H: 41"

SEAT DEPTH: 20.5"

SEAT HEIGHT: 15"

#### KNOCK DOWN

W: 23"

D: 7"

H: 40"



## GYMKHANA CROQUET CHAIR

Indulge in nostalgia for the Victorian age when the lawn game of croquet was a genteel pastime. This unique folding croquet chair made of finest rosewood is of exceptional design and quality. Very lightweight and portable, you can carry its elegance with you on your outdoor trips or use it to brighten up any room at home. Beautifully designed, shaped and polished, a pleasure to own and use.

W	D	H
18 ¾"	23"	31"







Croquet In Morocco.



## ROORKHEE CHAIR

This highly portable, lightweight, extremely comfortable chair has a brilliantly functional design that makes it stable to sit on even in the most uneven terrain. A workhorse of the British colonial campaign ensemble until well into the last century this chair is virtually indestructible and will become a much-loved feature in your home or at your outdoor activities. When you use the chair, the straps, arms, seat, and back all act under tension to keep the whole structure in place, allowing it to adjust to uneven ground and remain perfectly stable. Made from the finest Rosewood, canvas and buffalo hide, the chair comes with its own carrying bag of durable canvas included in the price.



W	D	H
22"	22"	35"



THE ROORKHEE CHAIR IN FAMILIAR TERRAIN  
EVEREST BASE CAMP 1925





## SERAI CHAIR

Our Serai chair is elegantly spartan and provides outstanding comfort and durability .Hand crafted from richly seasoned dark rosewood .It has a double layer of caning with the knots concealed by a rosewood frame so the chair looks elegant even from behind or when folded.The functional brass fittings are handmade and highly polished to harmoniously accentuate the elegance of this fine lounge.

W : 26"

D : 23"

H : 36"

WHEN FOLDED

W : 26"

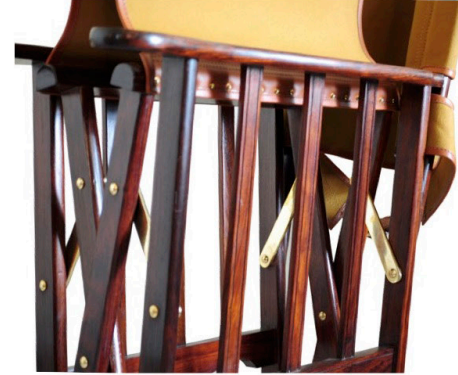
D : 5"

H : 36 3/4 "



## LANDOUR CHAIR

The Landour Chair embodies comfort, stability and stateliness. A classic safari design with promising rosewood legs, heavy duty 24 oz canvas and solid brass hardware, it is undeniably one of our most steady and comfortable chairs. Named after a British cantonment town where we first saw and used an original, the chair still stands tall today. Its easy portability makes it fit for indoor and outdoor use, both. A wonderful inclusion to your home, garden, study and with its rubberised leg ends- even your boat!



DIMENSIONS:

W- 23.5" D- 25" H- 35.25"





## MARTIN CHAIR

Elegance and comfort are combined with simple functionality in this classic campaign chair made from solid rosewood and bespoke brass fittings. Slip over seat of durable full grain buffalo hide holds you in comfort and will improve with age to a beautiful patina. Versatile for use in a multitude of settings, this chair piano folds easily and stows in the carry bag provided.



W : 20.5"

D : 27"

H : 34"

WEIGHT: 13 LB

Frame when folded

W: 5.5"

D: 3"

H: 36"



MARTIN CHAIRS WITH THE JOHRAT CAMP TABLE  
THE SERAI CAMP, JAISALMER



## TABLES



BREAKFAST AT THE HIMALYAN FOOTHILLS  
CIRCA 1925

## WELLESLEY SECRETAIRE

Named after the Duke of Wellington; who raked military successes in India during his tenure as major general. The large sized secretaire is adorned with brass accents on the edges. It has a lift top which opens to reveal a number of compartments; open and closed. Self locking brass hinges keep the top up, erecting a shelf with many open compartments for letters, telegrams, stationary, post cards etc. There's an assortment of closed segments in various sizes for personal effects and valuable items, offering utmost organisation and order. The desk has brass handles on each side and legs that unscrew making it easily portable for travelling headquarters.

Dimensions:

W: 42"

D: 26"

H: 32"

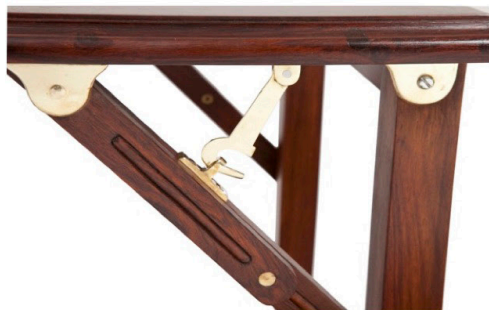




## BIKANER TABLE

Our new Bikaner Folding Table is elegant and sleekly contoured. Only the most beautifully figured  $\frac{3}{4}$ " solid rosewood boards were chosen for the 20.5" x 30" table top, the edges delicately angled for a frame-finished look. The square tapered legs are locked into position with hand made solid brass hooks. The legs on one side are further apart, a special design feature unique to the campaign era, enabling it to fold compactly for the most efficient use of storage space and simplicity of transport. Standing at 26" high and folding to less than 4 inches thick, this sleek, elegant and versatile campaign-folding table will serve you well as a writing, game or display table.

W: 30"  
D: 20.5"  
H: 26"



## BOMBAY CHART TABLE

The Bombay folding chart/card table is beautifully designed from solid rosewood to hold magazines, maps or games in the rack below. It looks great both indoors and outdoors and folds quickly for storage or transport.

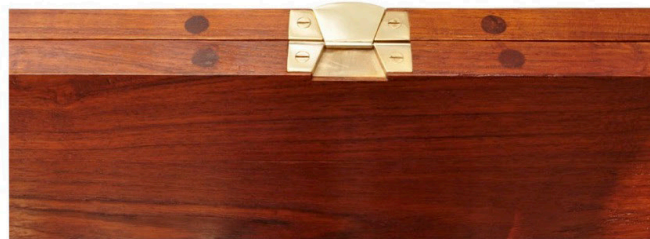
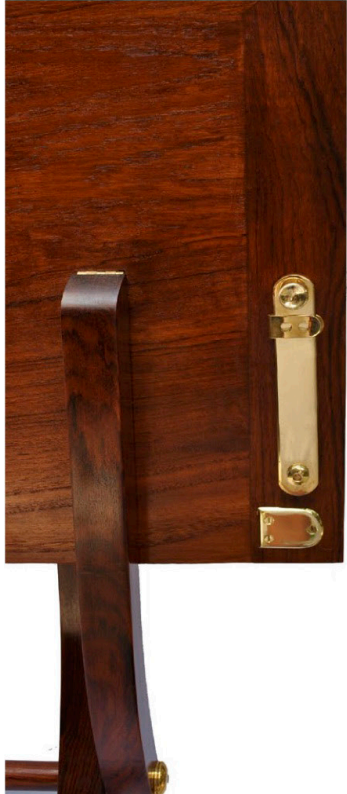
W	D	H
22"	22"	27"





## ANNADALE CARD TABLE

A 19th century design card table with a baize lined top. The classic English X framed legs have an elegant sweep. The table has two brass locking bars to stabilize the hinged top. The fine details make this a gorgeous table for both a traditional or modern setting.



W: 25.75 "   
D: 30 "   
H: 30"

*Folded:*   
W 25.75"   
D 9"   
H 43.25"

## KIPLING TABLE

Our rosewood folding table is complemented by immaculately hand crafted solid brass hinges, which accentuate the understated elegance of the design and the subtle curves of the legs. Durable rubber inlays in the feet prevent scratching of hardwood or marble floors. The 21.5" square top has a deep polish and is the ideal size for sharing a drink with a friend or reading on the porch. It stands 24 ½" high and easily folds down to only 6" wide and 32" tall. Simply twist the sturdy rosewood latch pull up on the sides, and carry it with you anywhere. Flawless and graceful this is an epitome of the campaign style.

H: 24 ½"  
TABLE TOP: 21.5"

*Folded:*

H 32"  
D 6"



## ALLAHBAD CARD TABLE

This smart and classic campaign card table made from rosewood is finished beautifully with a rosewood-mitered border.  
This sturdy table knocks down easily by unscrewing the legs. All metal fittings are of solid brass.

W	D	H
31"	31"	28 ½"



## TERAI DINING TABLE

This robust folding campaign dining table has been meticulously crafted from highly polished and seasoned rosewood with folding tapered square legs and a triple waterfall border. The 40 square top allows for comfortable dining for four or plotting battle strategy over maps. Can be quickly folded and carried by two for a very graceful al fresco setting.

W	D	H
40"	40"	30"

*WEIGHT: 60 POUNDS APPROX.*





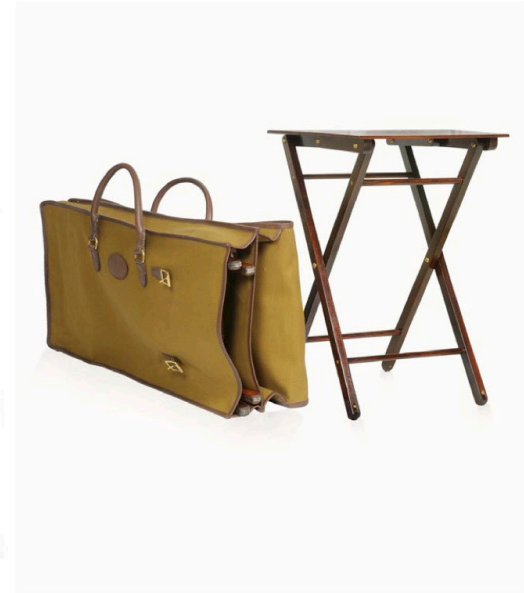
## JORHAT CAMP TABLE

This is a handy, must-have piece. Elegant and very portable, this rosewood piece has a generous 16"x14" table top with smart palm width cutouts to form a convenient handle. Sturdy yet lightweight you are likely to find yourself putting this to constant use both indoors and outdoors. The feet of the table have anti skid rubber fittings.

W: 14"

D: 15 3/4"

H: 22"



## MESTON FIELD WRITING TABLE

This writing table folds with the front legs swinging inwards on hinges attached to the back legs and the tabletop collapsing down over them. Making an extremely handy field table.

W	D	H
36"	24"	30"



## MERWARA DESK

Victorian style rosewood writing table with three drawers. The turned legs terminate in brass caps and castors, with the legs unscrewing to knock down.

W	D	H
47"	23"	29 3/4"



## AJMERE TABLE

Victorian style rosewood Campaign writing table with three drawers. The table surface and drawer facade are of superior vegetable dyed buffalo hide, which will develop a deep luster with age.

W	D	H
47"	23"	34"



AJMERE TABLE AND THE KING GEORGE CHAIR

## SKINNERS DESK



Handmade from rosewood this solidly elegant desk has a work surface of chocolate brown buffalo hide which will develop a beautiful patina over years of use. A two inch beveled border frames this. Beveled drawers are 13" wide and 6.5" deep and run the full width of the desk. Legs join the top seamlessly with brass plate for quick construction. Brass lined feet and handles; legs unbolt and can be stored in the drawers for easy packing and transportation.

W	D	H
54 ½"	30 ½"	30 ½"





## TENT FURNITURE & EQUIPAGE

CHOTA HAZARI FOR THE SAHIB

CIRCA 1890



## NAINITAL SAFARI BAR

Recreate the "under canvas" ambiance in your own home with our British Campaign Writing Desk/Bar fashioned from luxurious rich rosewood. Since the early 1700's British Campaign furniture has been appreciated for its innovative design, durability, versatility, and elegance ensuring British troops the highest level of comfort while operating in distant lands. All partitions in our Bar Chest are removable to custom fit and there is even a spot for a decanter and cups, or take the spacers out to make room for books. This extraordinary piece is 100% handmade from the brass handles and corner covers all the way down to the miniature skeleton keys of the solid brass padlock. A remarkable piece of furniture, as eye-catching as it is functional, would make a spectacular addition to your office or library.

W: 25"

D: 10"

H: 13"





## CAMPBELL MILITARY CHEST

Military Chests are representative of the most common type of Campaign Furniture- this particular chest is based on a mid 19th century design. Without question, it was a part of every officers kit and accompanied them on postings. Brass bound, this chest of drawers can be dismantled into two parts and has removable feet making it ideal for travel- relieving the life of a soldier and explorer on the move. Items were often efficiently stored in the chest during transportation and easily reassembled on arrival.

Made from solid rosewood, this beautiful chest promises stylish storage in your home, office or tent. Decorated with custom made brass corners for protection and ornate brass drawer pulls, lending to a classic campaign look.

The chest has five generous compartments in total- with two smaller drawers stacked on three long drawers. The rectangular top serves as a spacious stand for books, candle stands, maps, frames etc. Both sides are fitted with two sets of brass handles so they can be easily carried about.

Dimensions:

W – 42

D – 18.5

H – 40.5

Dimensions (Dismantled):

Top Shelf Height: 18

Bottom Half Height: 19

Height of feet: 3.5



## JAISALMER WINE COOLER

The Canvas bucket with leather trims is held up by a rosewood stand with brass scissor mechanism for folding. An extremely luxurious accessory for field dining.

W: 13"

D: 13"

H: 36"

H: *legs folded completely flat*: 38"







RUBBERISED LEGS MAKES IT FIT FOR  
STURDY HANDLING IN YOUR HOME OR ON YOUR BOAT

CANVAS BAG FOR THE JAISALMER WINE COOLER



## WHISKY GLASS CANTEEN

This is a beautiful rosewood box, lined with green or maroon blazer, with 6 compartments to hold exquisite hand cut whisky tumblers. This makes an ideal gift for the discerning outdoor Gentleman.

W: 13"  
D: 9"  
H: 5"







## ADJUTANTS VALET

Our rosewood Adjutant Valet is an extremely handy accessory for the office to hold your jacket, hat and also hang your keys. It is styled on a sample found in a military lancers anteroom in Poona. The hanger swivels out for use and easily folds back into a compact compartment which also has 4 beautifully hand made solid cast brass pegs.

### DIMENSIONS:

W- 22" x D- 2.75" x H- 13.75"

Weight : 4 Kgs



## OFFICERS MESS CUTLERY BOX



A very simple yet stylish design, this rosewood cutlery box has two neat open compartments to relieve the clutter that comes with cutlery . A solid brass carry handle extends upwards from the centre rendering a very elegant finish. The set can easily be carried from the kitchen to the dining room or outside to your garden. Adds a vintage charm to your counter top or picnic table!

Dimensions:

W: 11.25

D: 8.5

H: 5.75

Weight: 0.9 Kgs



## RUSKIN STANDISH

The rosewood Inkwell stand is a handsome desk accessory which holds two round hand cut glass inkwells with cartridge head stamp lids in brass. A drawer makes for excellent storage for your pens and other small accessories. It also has a brass carry handle. Will greatly compliment your writing table.

Dimensions:

W: 13.75"

D: 7.75"

H: 2.75"



Inkwell bottle Height : 2"

Total Weight : 2.5kgs



# NASIK DRINKS BOX

The Nasik drinks case is an important part of your field equipment as it is designed to hold 4 glass tumblers and your favorite Single Malt Whiskey. A great accessory for the smoking room as well.



W	D	H
14 ½"	9 ¼"	4 ¾"



## BARRACKPORE SECRETAIRE

Imagine the stateliness of writing the evening dispatches of a bygone era on our rich warm rosewood British Campaign Secretaire. It has 6 gracefully beveled & scalloped teak dividers that are removable to facilitate a personalized fit for books, dossiers, or stationery. Writing slate can be pulled out from above the 2" deep drawer. Marvelously handcrafted with impeccable mortise and tenon joints and sculpted molding on both sides of the doors and top so it is just as stunning closed as it is opened. Angles of the top and doors enable it to remain shut when transporting and a lock with a hand filed key keeps all your personal effects safe. Sunken brass handles render it easy to lift and carry.

W	D	H
16 ¼"	9 ½"	13 ¼"



## WHEELERS COT

The Wheeler bed is a true reproduction of a 19th century design. It has a rectangular top with molded edges, 9 pairs of extending X-shaped legs covered in doubled 24 Oz canvas with leather trims. The hardware is all equestrian quality brass. The front extends to form a molded footboard. This design is both unusual and practical. It can function as a very comfortable occasional bed and when closed an excellent side table with ample storage space in flap opening in the front.

W		36 ½"
D	When cot pulled open	86"
H	With flap up	26 ½"



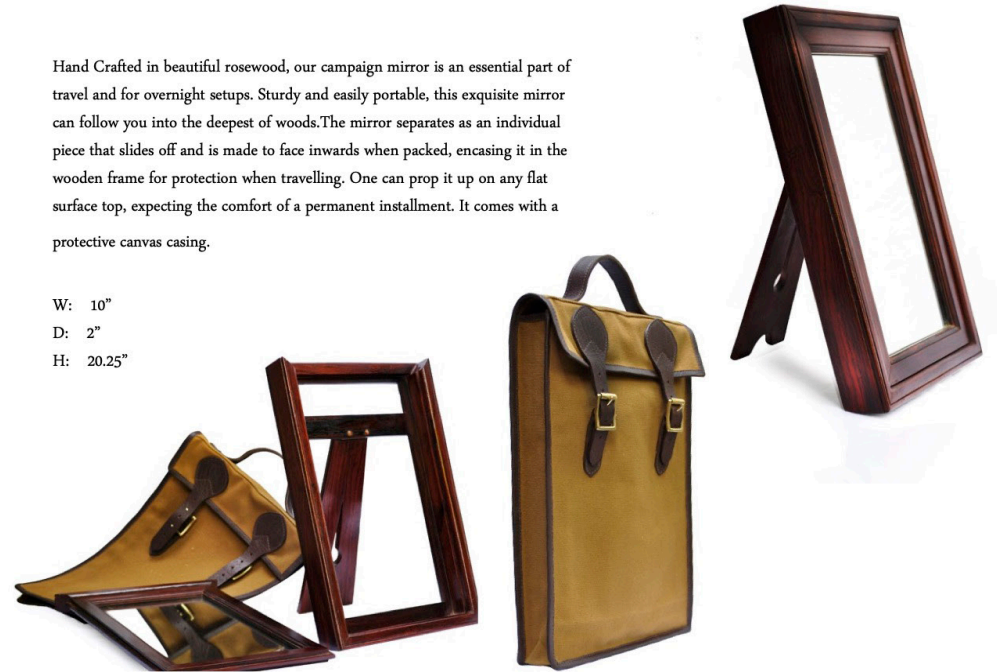




## BOMBAY CAMPAIGN MIRROR

Hand Crafted in beautiful rosewood, our campaign mirror is an essential part of travel and for overnight setups. Sturdy and easily portable, this exquisite mirror can follow you into the deepest of woods. The mirror separates as an individual piece that slides off and is made to face inwards when packed, encasing it in the wooden frame for protection when travelling. One can prop it up on any flat surface top, expecting the comfort of a permanent installment. It comes with a protective canvas casing.

W: 10"  
D: 2"  
H: 20.25"





## OUTRAM VERANDA DAY BED

Our Campaign bed can be used flat or raised at both ends to make a very comfortable day bed. The frame hinges in the centre and the legs unscrew so that it would fold away to take minimum space in an officer's baggage train. Rosewood frame with cane work sections and legs fitted with castors machined from solid brass. The bed comes with a well padded canvas mattress.

W: 27 ¾"  
D: When bed unfolded open: 83"  
H: 16"



## HALL STAND

Handmade from solid rosewood this distinguished hallstand will add elegance to your foyer or trophy room. Like all our campaign furniture it dis-assembles easily with a removable base and center disk and the post joined in the center. It stands a handsome 6'5" tall with a base diameter of 21.5". The center disk can be ordered in either the stick stand or gun stand options. Will take several hats, coats, belts and bags.

DIAMETER: 21.5"

HEIGHT : 6'5"



## DAGSHAI HAT STAND

Handmade from solid rosewood this distinguished hallstand will add elegance to your foyer or trophy room. Like all our campaign furniture it dis-assembles easily with a removable base and center disk and the post joined in the center. It stands a handsome 6'5" tall with a base diameter of 21.5".The centre disk can be ordered in either the stick stand or gun stand options. Will take several hats, coats, belts and bags.



OPEN HEIGHT: 77"

FOLDED HEIGHT: 35"



## AUCKLAND BOOK STAND

This elegantly Spartan and very sturdy campaign bookcase is made from solid thick rosewood boards. No veneers. Numbers are stamped into each shelf for quick assembly with pegs held in place with tapered rosewood shims. Will provide a warm and appealing display for your books, trophies or curios in the office or home.

W	D	H
39 1/2"	9 3/4"	55"



## JEOLIKOT SAFARI BAR

Beautifully hand crafted Croco Pattern Leather & Rosewood drinks cabinet, a statement piece indoors and outdoors that allows you to store your spirits in style. A handy design with a lift out tray which doubles as a flap to securely hold in place 6 glasses. This gorgeous deep pine green case with elegant but strong solid brass fittings is the most luxurious cabinet you will find for use in the field.

W: 9"

D: 10"

H: 17.5"



CANVAS BAG FOR THE JEOLIKOT SAFARI BAR



## KALADUNGHI WASH STAND

This elegant campaign dresser with washbasin is a unique and utilitarian piece of portable furniture for the home, camp or old world cloakroom. Made of solid rosewood with detachable legs and fold down mirror assembly, it is easily knocked down for transporting or storage. The solid polished brass washbasin develops a distinctive character with use and the natural germicidal properties of the metal make it simple to clean. Two drawers with a depth of 2 feet each provide adequate storage for the well groomed campaigner. A solid brass pitcher with a capacity of 5 litres is a natural accompaniment to the dresser and can be ordered separately.

W - 38"  
D - 22.5"  
H - 51" (MIRROR UP)  
- 31.5" (MIRROR DOWN)



## UMBALLAH DRESSER

This Campaign Dresser is one of our favorites with its easy collapsible mechanism, making it the perfect camping equipage to ensure you are as comfortable at camp as at home. Built from the finest rosewood and finished to a fine glossy sheen. Its lightweight and knockdown size is a great asset for travel.

W : 39"

D: 20.5"

H: 55.5" (MIRROR UP)

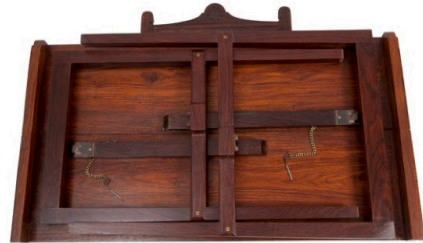
30.5" (MIRROR DOWN)

### KNOCKED DOWN

W: 39"

D: 26.5"

H 4.5"



## MADRAS LUGGAGE RACK

This is our new Madras Settee Bench hand crafted of warm radiant rosewood solids, no veneers. The beadboard style seat is hand contoured exquisitely figured rosewood slats of generous proportions. Use it anywhere- a spectacular display for your vintage quilts, ideal for keeping your cozy blankets handy at the foot of your bed. Decorated with imperial cut out sides and square tapered legs secured to the seat with our own brass hardware, this exclusive settee is sure to perk up any room in your home. Like all of our items in our campaign line, it is quickly and easily constructed for use and simply disassembled for storage or transport.



CANVAS BAG FOR THE LUGGAGE RACK

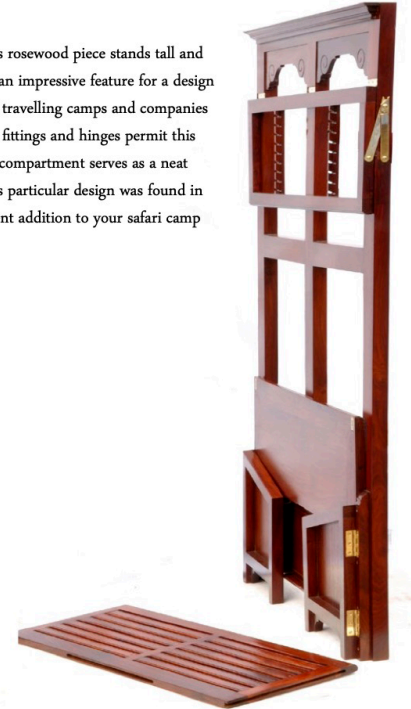
W - 37"  
D - 19"  
H - 27"

## MEERUT CLOTHES STAND

Ordinarily found in old officers messes during the time of the British Raj, this rosewood piece stands tall and carries out its service as a clothes stand rather elegantly. It folds entirely flat- an impressive feature for a design so monumental. Thus deeming it suitable for transport. This was an asset for travelling camps and companies as they would carry their "bandobast" wherever they were posted. Solid brass fittings and hinges permit this function while simultaneously adding to its charm and strength. The bottom compartment serves as a neat storage space for fresh linen or even boots, as it did back in the old days. This particular design was found in an officers mess in Meerut and earns its name from there. It makes an excellent addition to your safari camp collection.



W 41.2"  
D 15.5" open  
3.5" closed  
H 74"



## CAWNPORE CLOTHES STAND

The Cawnpore clothes stand is a typical design found in old Cavalry Officer Mess's in colonial India.

W 41.5 "  
D 16 "  
H 74 "





## NAPIER CLOTHES STAND

W: 40.5"

D: 13 "

H: 63.5"



## HAVELOCK BED

Perfect for a peaceful rest, this comfortably sized, beautifully constructed Havelock Bed, is a simple and steady design borrowed from the "Dak Bungalow" days. Officials of the Raj were expected to come equipped with their own bedding, as beds were fairly unconventional in these bungalows back in the day, but this novel piece managed to live on. Entirely collapsible, owing to its detachable legs, posts and boards, the bed can be easily transported and compactly stored. The frame for the mosquito net that towers overhead, adds a dreamy Victorian charm.



OUTER DIMENSIONS

LENGTH: 84"

WIDTH: 42"

MATTRESS HEIGHT

16.5"

HEAD REST MAX

38.5"

FOOT BOARD MAX

27"



## CURZON SHOOTING STICK

A groundbreaking addition to our seating line, the Curzon Shooters Stick is one of our most versatile outdoor pieces. Dating back to the Edwardian period, the stick that doubles as a seat in the field is a timeless one. Delicate but unmistakably sturdy, the stick is a wonderful accessory for outdoor activities such as ground hunting, races and camping. The built-in surprisingly comfortable seat that spares a good rest, is made from robust bamboo cane and solid brass. The stick ends with a stainless steel spike that promises a remarkable anchorage. An absolute essential for those who love the great outdoors.



CANVAS BAG FOR THE CURZON SHOOTING STICK



A Horseman enjoys a break on his shooters stick.

## LUCKNOW TEA TRAY

This low table is a must have for your evening tea on your balcony or verandah. It folds easily to be stored in limited spaces. The detachable tray is another very handy feature.

OPEN:      W 24.3"  
              D 21"  
              H 16"

CLOSED :   W 24.3"  
              D 6.5"  
              H 18.2"



## KELSTON BUTLERS TRAY

A very useful piece of furniture for families accustomed to giving dinner parties, these trays are found useful as forming additions to the side board.

W: 26"  
D: 17"  
H: 32"



FIXED TRAY

## CHAPSLEE BUTLERS TRAY



DETACHABLE TRAY



## MUSSOORIE CHESS TABLE

This games table is made with buffalo horn and bone inlay for the chess table top. An extremely elegant addition to your drawing room.

W	D	H
24"	24"	27"

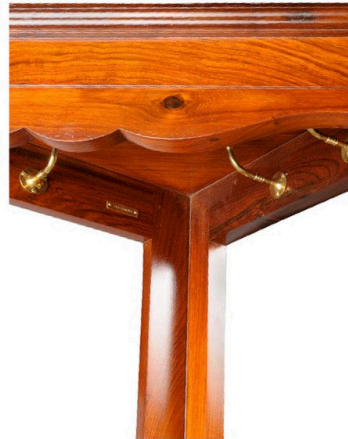


## TOLLYGUNJE CLOAKROOM CORNER

This is a useful piece of furniture to occupy wasted corner space as its triangular form fits perfectly. The lower stand has a closet with cane weaving to hold your laundry. The top has 10 brass hangers and 2 brass rails, which makes this stand extremely versatile for camp or home use.

W	28"
D	13"
H	76 ½"





## WALTER LOCKE DISPLAY CABINET

This beautiful piece boldly hangs on the wall of your living room or study. The rosewood frame promises utmost strength and safety for your prized collection of small items. The large glass front grants an unobstructed view of your precious objects on display. The interior lined in blazer comes in a lovely shade of forest green or burgundy, enhancing the smartness of the room it is placed in and the items it showcases. An absolute must have for a collector of medals, knives, fishing hooks and even keys! This classic design comes with thirty elegantly fixed brass pegs inside, making storage simple and pleasing to the eye.

W 27"  
D 6"  
H 48.5"



## COMBERMERE RATCHET LAMP

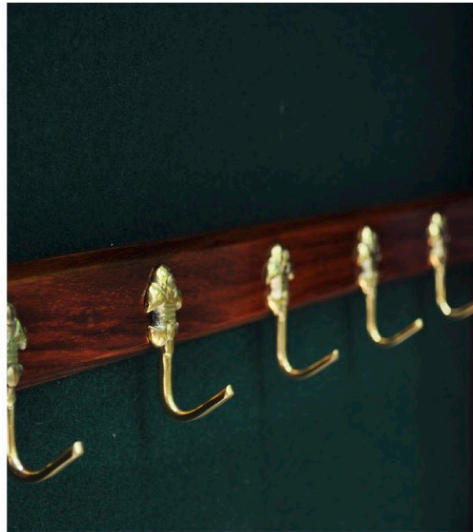
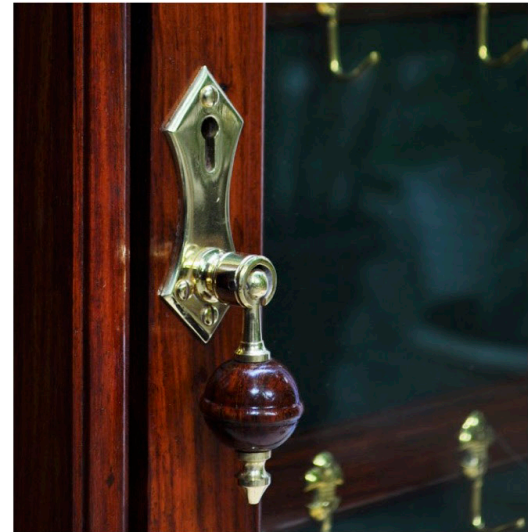
A grand source of light for a room big or small, the Combermere Ratchet Lamp has a unique feature that sets it apart from most standing lamps. The grooves carved from rosewood allows the functionality of a ratchet mechanism to come into play. Letting the lamp grow to soaring heights at your command, and be brought down just as easily. The sturdy base of the lovely long lamp is removable, rendering it easy for packing and transport. An exceptional addition to your indoor or outdoor lighting system.

### DIMENSIONS :

Base : 17" (diameter) x 3" (height)

Height: (to the holder) : 66"  
: 100" (fully extended)

Weight : 9.62 kgs



## SAVOY SERVICE TROLLEY



This Rosewood two tier serving trolley is an extremely versatile accessory for your evening tea or cocktails. The trolley is easily maneuverable on solid brass castors, the top tier has two subtly disguised drawers placed under the removable service trays with the lower tier having a single large drawer. Simple, aesthetic and functional for small spaces and apartments.

### DIMENSIONS:

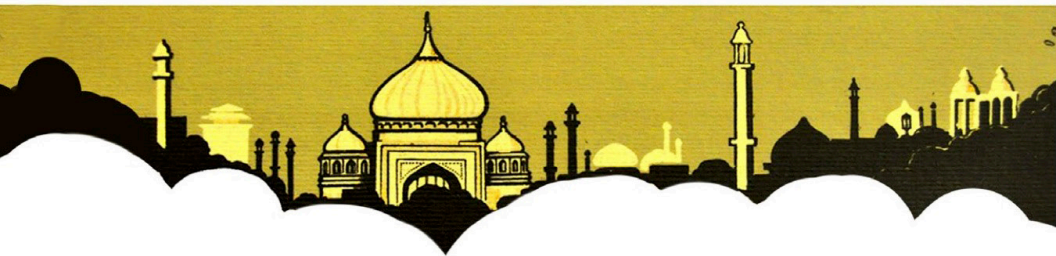
W: 33"

D: 19"

H: 29.5"







## GIFTS & LUGGAGE

### CANVAS SPORT BAG

Rugged yet elegant. It's a combination nearly impossible to pull off, yet our classic canvas and leather luggage collection does it effortlessly. We began with a water resistant heavy weave 24 Oz double canvas that has been treated to resist staining and shrug off the assaults of modern travel. We combined it with the finest full grain, vegetable-tanned leather, and heavy-duty YKK zippers. The result is a beautiful and functional bag, constructed to last a lifetime. Detachable shoulder strap. Zippered internal slip pocket. Studded baseboard.



#### DIMENSIONS:

Length: 20"

Width: 10"

Height: 13"





## GANGTOK BACKPACK

Our Gangtok Backpack comes in genuine top grain buffalo hide with a rich soft leather lining. The hardware is all solid brass for extra durability. Extremely comfortable cotton webbed shoulder slings. One of the handiest pieces of luggage any sportsman or traveler can own.

W: 16"

D: 5"

H: 17"



CANVAS



LEATHER

## KIRBY FIELD TOTE BAG

The Field Tote is an absolute necessity for your travels. It is made from 24 Oz canvas with leather trimmings and is capable of holding heavy weight such as cartridge boxes, wine bottles and your daily shopping needs. It has a detachable cotton webbing sling.



## THE DALHOUSIE OVERNIGHTER

The Dalhousie overnighter goes hand in glove with the spirited traveller. Remarkably transportable, this piece of luggage meets your spontaneous travel needs incomparably. Created with 24 oz sturdy impervious canvas and securely ornamented with quality buffalo hide, the bag still manages to achieve commendable lightness. The detachable leather shoulder strap and strong handle compliments its function as an easy to manoeuvre overnighter. Generous with space, the bag also has a small pocket on the inside for smaller effects. A handsome and handy must-have for your luggage collection.

### DIMENSIONS:

LENGTH: 22"

WIDTH: 8"

HEIGHT: 13"



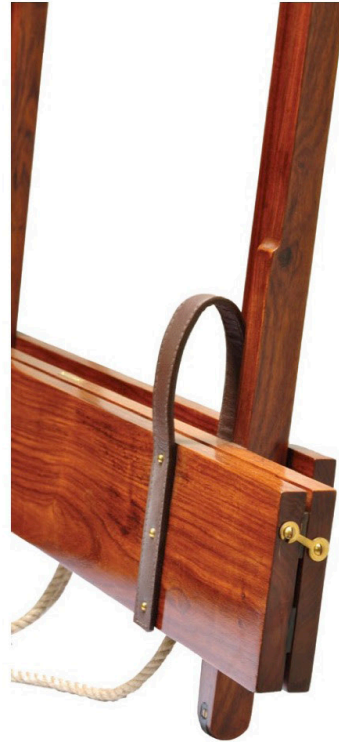
## ADMIRAL BAKER GUN RACK

We discovered this Admiral Baker Gun Rack, dating from the turn of the century, and found it so useful we decided to reproduce it. Fashioned in beautifully figured solid rosewood with all brass fittings, leather pads for the gun barrels, and rubber strips for the butts. Folds up easily for transport to the field and latches close with 2 brass hooks on the sides. Impervious to weather, it is perfect for an outdoor shoot and the rubberized feet render it safe for hardwood floors in the finest gunroom. A truly stunning display for your favorite guns. Superior quality and built to last for several lifetimes, this makes a fantastic gift for the gun enthusiast.

### DIMENSIONS:

WIDTH: 31 1/2"

HEIGHT: 33 1/2"





## KHYBER KANTEEN

This hardy and versatile container of classic campaign design stands out due to its unique lines. Constructed of tough buffalo hide, it has two separate felt lined compartments for carrying your food and drink on a campaign, trek or picnic. The intrinsic strength of the design makes it useful for carrying heavy portable equipment as well. Comes with a carrying strap of heavy-duty cotton canvas webbing. All buckles are of solid brass.



Dimensions:  
LARGE:  
Height: 16"  
Width: 14.2/8"  
Depth: 6"  
  
SMALL:  
Height: 14"  
Width: 9.2/8"  
Depth: 5"



## SLEEMAN SAFARI BAR

Our safari bar is an indispensable travel accessory for those who enjoy a drink with friends on the journey. It features four stainless steel tumblers stacked over a hand blown, hand cut glass 1/2 pint decanter, inside a unique and tough buffalo hide leather pouch lined with soft suede. The adjustable leather strap is secured with a solid brass buckle.

DIMENSIONS:

HEIGHT: 8"

Diameter on top: 4 1/2"



## DUFFERIN TRAVEL HANGER SET

The Dufferin Travel Hanger set can be reckoned as the unmatched appliance for the debonair voyager in our opinion. The exquisite design has been borrowed from the Edwardian period, before the luxuries of travel were lost. A handy item, the solid brass hangers come in a compact set of three, neatly packed in a leather or canvas case, deeming it exceptionally easy to carry on your expeditions. A wonderful and thoughtful gift to present or receive.



*Folding hangers in horn / bone and brass ,  
A set of three in a canvas case , ideal for the avid traveller .*

## LEATHER COASTERS

A striking blend of durability, practicality and aesthetic, our deep chocolate hue coasters make a fitting addition to your beloved home and bar, both in and out doors. The use of neatly line stitched genuine leather gives good grounds for expecting utmost quality and style.

Set of 6 leather coasters

Size : 4" Diameter



## BARRACKPORE STRAP

Five solid brass hooks riveted into a thin strip of rugged buffalo hide, our barrack strap is a necessity on any safari or camp site. Hang it on a nail and you instantly have a place to stow your jacket, hat, camera, or binoculars. No nail handy? Wrap a cord around a tree and suspend it. Roll it up and tuck it in your ruck sack when you're headed home. Ideal for your house or garage, too. So incredibly convenient you'll find a hundred uses for it! A neat unique gift for a camper they'll find no where else.

SIZE : 30" x 1.5 "



## METCALFE BRIGHTHON BUNS

The Brass Brighton Buns are rather clever folding candlesticks which were used by explorers and soldiers in the 18th and 19th centuries. They consist of two drip-pan bases with candle cups which screw in to the base to provide two chambersticks. When not in use the candle cups are unscrewed and stored in the bases which in turn screw together to form the Brighton Bun.

DIMENSIONS.

Diameter: 5.25 inches.

Height: 3.5 inches.







HORN WHISTLE





HARNESS LEATHER LEADS



PLANTERS AXE



## BRASS PUG

Moulded around the pugmark of a magnificent Bengal Tiger, this solid brass ashtray is a mighty addition to any smoking room. Like the king of the forest, this heavy, hand polished piece simply can't be ignored. Presented in a tough suede drawstring pouch, it makes a wonderful gift.



DIMENSIONS:

Diameter: 6"

## NOOR PEN STAND

Elegantly carved solid brass combined with gracefully chiselled Rosewood, the Noor Pen Stand stands out as a thoughtful and novel gifting piece. It sits beautifully atop your writing table, enticingly exhibiting five of your precious writing tools. The base of the stand is handsomely protected with the finest leather lining. The intricate, glowing design against the rich chocolate colour of the wood makes the item a marvelous showpiece too. With quality that exceeds your expectations, this pen stand deserves every writer's attention.



DIMENSIONS:

W: 7" D: 4 1/4" H: 4 1/2"

## “MEER FARSH“ DOORSTOP

This exquisite design was inspired by a Circa 17 Century Mughal marble “Meer Farsh” We found in our travels which was used for keeping the corners of carpets weighed down.

### DIMENSIONS:

Width 6.2”

Depth 6.2”

Height 9.5”

Weight: 4.2 kgs

